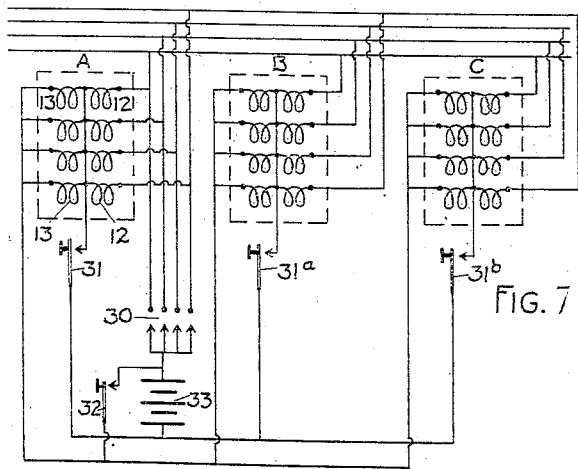
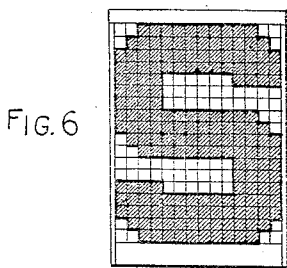
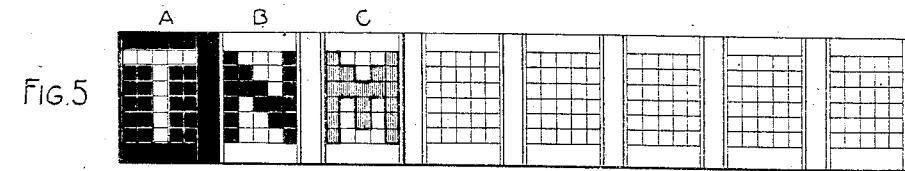
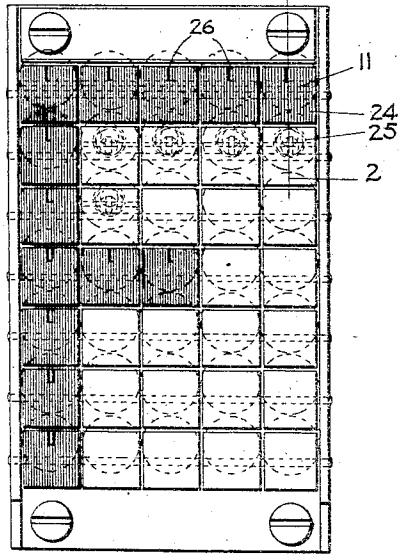
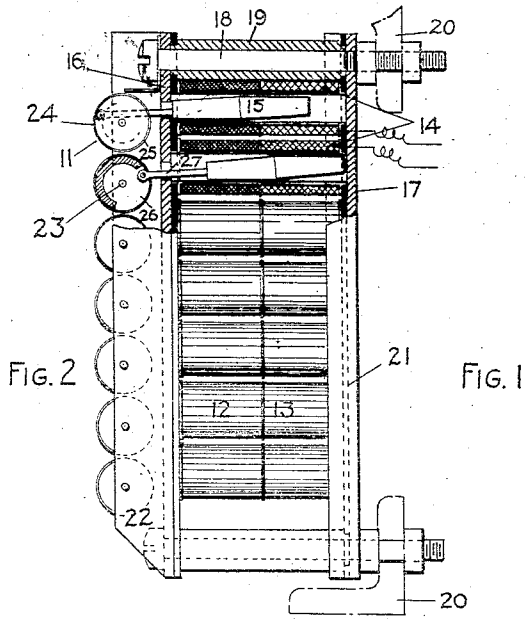


F. SCHAEFER  
 ELECTRIC SIGN.  
 APPLICATION FILED NOV. 11, 1911.

1,069,582.

Patented Aug. 5, 1913.

2 SHEETS-SHEET 1.



WITNESSES  
*J. H. Winter*  
*W. C. Lyon*

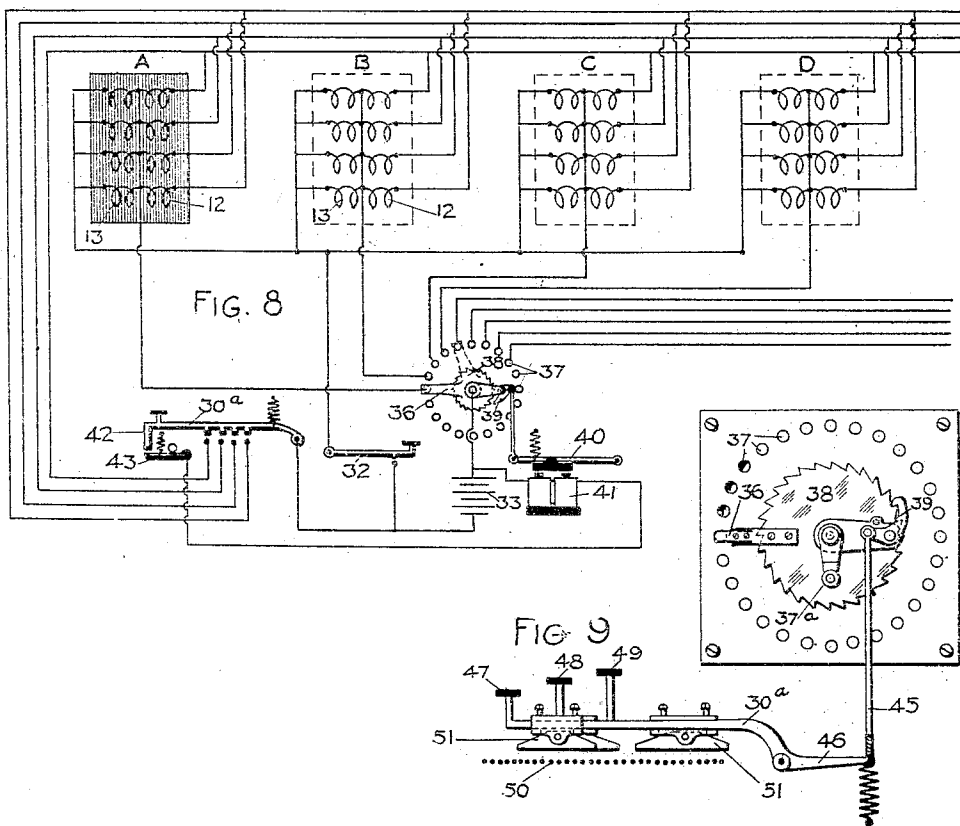
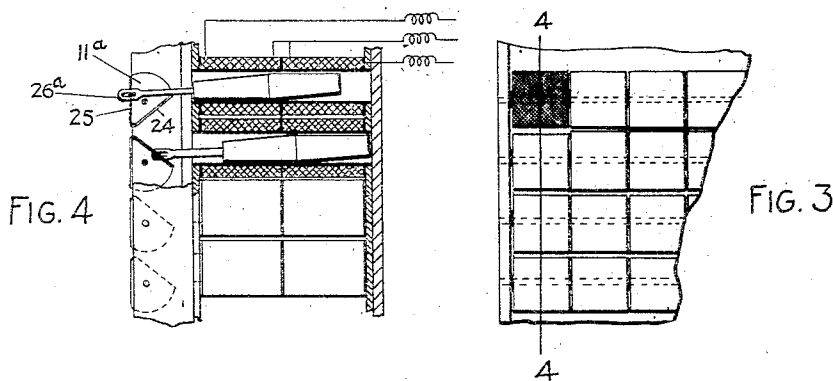
INVENTOR  
*Fredric Schaefer*

F. SCHAEFER.  
ELECTRIC SIGN.  
APPLICATION FILED NOV. 11, 1911.

1,069,582.

Patented Aug. 5, 1913.

2 SHEETS—SHEET 2.



WITNESSES  
*F. H. Winter*  
*W. C. Lyon*

INVENTOR  
*Fredric Schaefer*